



jordan fishwick

Twayblade Crescent Chapel-En-Le-Frith High



Twayblade Crescent Chapel-En-Le-Frith High Peak SK23 9AE

£525,000



The Property

Overlooking an open green on this popular modern development built by Barrett homes in Chapel-en-le-frith, a stunning and deceptive five bedroom family home. Perfect for the modern buyer of today with high energy efficiency and a great layout including an 18ft living room and separate 27ft living dining kitchen with French doors. Also comprising: entrance hall, wc, utility room, first floor master bedroom, with en-suite, second bedroom with en-suite, three further bedrooms and a family bathroom. Integral garage, ample driveway parking and enclosed gardens. Remaining new build warranty, pvc double glazing and gas central heating. Viewing highly recommended.




- Deceptive Detached Home
- Perfect Balanced Accommodation
- Sought After Location
- Five Bedrooms
- 27ft Living Dining Kitchen
- Lovely Outlook
- Integral Garage and Ample Parking
- Private Gardens
- Immaculately Presented

Postcode SK23 9AE

EPC Rating B

Local Authority High Peak

Council Tax E

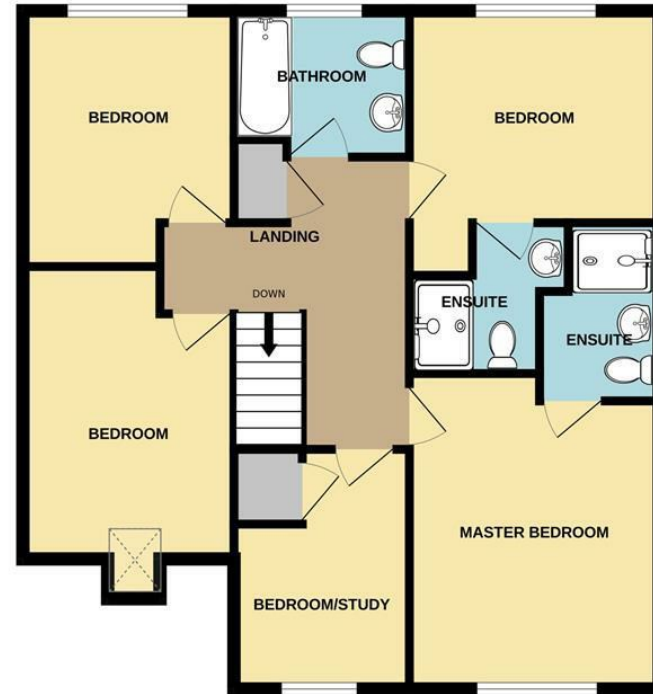
Energy Efficiency Rating		
	Current	Potential
Very energy efficient - lower running costs		
(92 plus) A		93
(81-91) B	84	
(69-80) C		
(55-68) D		
(39-54) E		
(21-38) F		
(1-20) G		
Not energy efficient - higher running costs		
England & Wales	EU Directive 2002/91/EC 	



GROUND FLOOR



1ST FLOOR



Whilst every attempt has been made to ensure the accuracy of the floorplan contained here, measurements of doors, windows, rooms and any other items are approximate and no responsibility is taken for any error, omission or mis-statement. This plan is for illustrative purposes only and should be used as such by any prospective purchaser. The services, systems and appliances shown have not been tested and no guarantee as to their operability or efficiency can be given.
Made with Metropix ©2023



These particulars are believed to be accurate but they are not guaranteed and do not form a contract. Neither Jordan Fishwick nor the vendor or lessor accept any responsibility in respect of these particulars, which are not intended to be statements or representations of fact and any intending purchaser or lessee must satisfy himself by inspection or otherwise as to the correctness of each of the statements contained in these particulars. Any floorplans on this brochure are for illustrative purposes only and are not necessarily to scale.

Offices at: Chorlton, Didsbury, Disley, Hale, Glossop, Macclesfield, Manchester Deansgate, Manchester Whitworth Street, New Mills, Sale, Wilmslow and Withington

14 Market Street, Disley, Cheshire, SK12 2AA

01663 76 78 78

disley@jordanfishwick.co.uk

www.jordanfishwick.co.uk